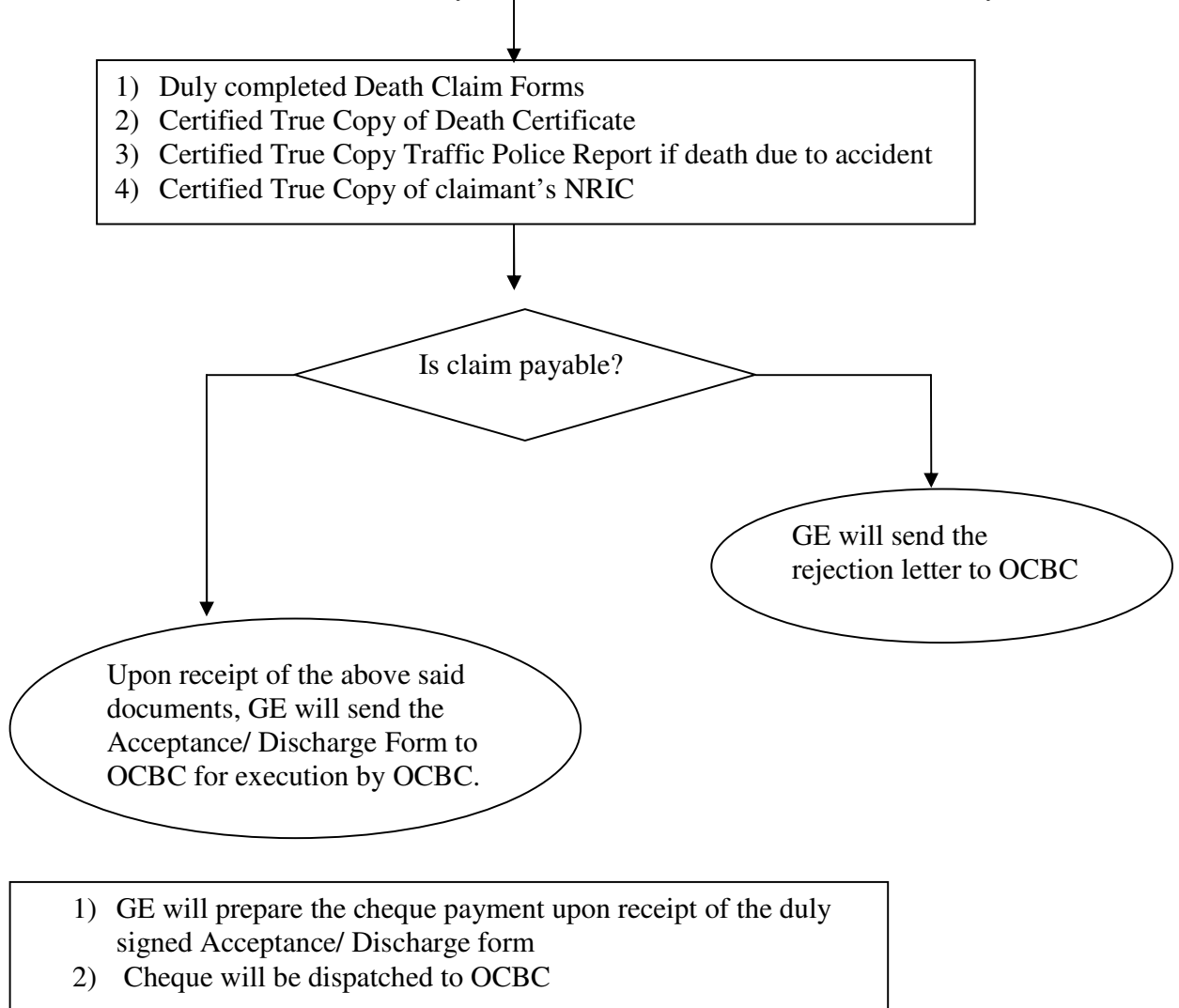


GREAT EASTERN LIFE ASSURANCE CO LTD (“GE”)

**GROUP PERSONAL ACCIDENT POLICY FOR
OVERSEAS-CHINESE BANKING CORPORATION LIMITED (“OCBC”)
CHILDREN DEVELOPMENT ACCOUNT (BABY BONUS)**

DEATH CLAIM PROCESS FLOWCHART

Submission of the Death claim by Insured Member’s next of kin to GE directly



Important Notes:

- 1. Please note that the above are the basic documents required for filing of the claims, other documents may be required depending on the claim case.**
- 2. Written notice of the death of the insured member must be given to GE within 31 after the death of the insured member with the required documents**

This Claim Process Flowchart serves only as a guideline as the Claim Procedure stated in the Policy Contract governs the claim admissibility

